



Research Triangle Branch
American Association for
Laboratory Animal Science

Quarter 3 2018

Homes for Animal Heroes 5K 2018



Table of Contents:

President's Message

Executive Council 2018

Technician Achievements

"Since Our Last Edition"

Upcoming Events

Vendor Spotlight

President's Message:

Greetings,

I can't believe that this year is almost over! It has flown by so quickly. We have had some great events over the last few months, including a frog wet lab at NC State and Homes for Animal Heroes 5K Dog Walk/Run. Our RTB AALAS Team not only exceeded our goal but earned the AALAS Team Award AND the Heart of a Hero Award as the leading team among all 25 teams. Kudos to Courtney Nesline of UNC-CH and Julie Kent of Duke University for being among the top three individual fundraisers among 192 wonderful friends of Homes for Animal Heroes. Way to go Courtney and Julie! Thanks to everyone that participated in the HAH Virtual 5K. The Golf Tournament and 2nd Annual Cornhole Tournament were a huge success again this year! Thanks to our amazing vendors for your continued support. This year the proceeds from all the games were donated to Homes for Animal Heroes. RTB AALAS is so elated to be able to help advance HAH's mission, which includes providing permanent, loving homes for retired research animals through their nationwide rehoming network and educating the public about the benefits of biomedical research relating to human and animal health and well-being.

I am looking forward to our upcoming events, which include a tour/volunteer event at the Carolina Tiger Rescue in Pittsboro on October 12th. None of our programs would be possible without our incredible Executive Council who take time out of their busy schedules to volunteer to serve. If anyone is interested in serving on the Executive Council or has any questions, comments, or suggestions please email us at info@aalas.org. Also, be on the lookout for information about our new website that should be up and running soon.

I look forward to seeing you at our upcoming events!

Jessica Blackwell



Quarter 3 2018

**EXECUTIVE
COUNCIL**

2018 Executive Council

President- Jessica Blackwell

Past President- Julie Kent

President Elect- Emily Butler

Treasurer- Joy Brinkerhoff

Secretary- Lena Perdue

Programs- Julie Kent

Vendor Liaison- Nancy McCormick

Newsletter- Emily Butler

Local Arrangements- Ashley Foley

Awards- Courtney P. Nesline

Membership- Steve Figueroa

Webmaster- Janet Steele

Nominations- Lindsey Morgan

Communications- Jennifer St. Laurent

Technician Achievements



UNC:

Joel Daniel-ALAT

Kendra Gully-ALAT

Chris Osuorji-ALAT

Tusha Patel-ALAT

Milaan Waters-ALAT

Jessica Watt-LAT

NC State:

Mark Curley-ALAT

Social Media



How many of you are on social media? Did you know that RTB AALAS has a social media presence? Check out our page: RTB A.A.L.A.S. There are a number of other organizations that are on Facebook as well! Some of the organizations you might want to add to your Facebook feed are listed below.

Homes for Animal Heroes

Homes for Animal Heroes (HAH) is a national program dedicated to rehoming retired research animals, mainly dogs, and sharing the facts about the critical role animals in research play in curing disease. HAH is building a network of dog experts that can effectively work with research institutions to rehome retired research dogs in every state across the country, one location at a time. Our goal is to permanently rehome these animal heroes into loving homes through a comprehensive foster-based program.

<https://www.facebook.com/homesforanimalheroes/>

Understanding Animal Research

This page regularly shares a weekly roundup of animal based research results called "This week in animal research." The features have pictures and a link to the Understanding Animal Research page. The page then links to each of the six studies featured. It's easy to share these to your own feed to help your FB friends know what discoveries animal research has led to.

<http://www.facebook.com/UnderstandingAnimalResearch>

The Foundation for Biomedical Research

This is the Facebook page for the well-known advocacy group. They regularly share items related to animal research that can help keep you in the know about what's happening in biomedical research.

<http://www.facebook.com/FBResearch>

AALAS

Our parent organization is on Facebook! Their page feed has news about deadlines and changes going on at AALAS and occasional features on services and products AALAS offers.

<http://www.facebook.com/pages/AALAS/221279445386>

The AALAS Foundation

The AALAS Foundation is very active on Facebook, hosting part of the Share that you Care campaign on Facebook and regularly posting updates on ways to work on outreach.

<http://www.facebook.com/aalasfoundation>

RTB AWARDS CATEGORIES & CRITERIA

Rookie of the Year (Vendor – changes yearly)

Plaque & \$100

Criteria: 1 year or less working in an animal facility. Current membership in RTB AALAS.

Bio-Serv Enhancement or Improvement of Animal Welfare Award (Bio-Serv)

Plaque & \$250

Criteria: Member of RTB AALAS. Person nominating must also be a member of RTB AALAS. To recognize contributions of an individual who have contributed a positive impact to enrich, enhance, and/or improve the lives of animals or the environment they work in with regard to animal welfare.

Purina Prolab Award (Purina Mills)

Plaque & \$100 plus \$50 to National AALAS Foundation Education Committee

Criteria: Individual must have daily contact with animals and demonstrate positive attitude toward animal welfare, performance excellence, pursuit of knowledge in the field of laboratory animal care, and innovative approaches to husbandry-related problems. Formal education is not considered. Current membership in RTB AALAS.

Research Technician Award (Envigo)

Plaque & \$250

Criteria: LAT or AALAS-Certified Technologist working with the technical aspects of a research project. Current membership in RTB AALAS.

Technician of the Year Award (RTB AALAS)

Plaque & \$250

Criteria: LAT or LATG who is involved in RTB AALAS. Current membership in RTB AALAS.

President's Award (Charles River)

Plaque & \$500

Criteria: ALAT or LAT, not at a supervisory level, who exemplifies outstanding dedication and service to the field of Laboratory Animal Care. Current membership in RTB AALAS.

Innovation Award (Tecniplast)

Plaque & \$250

Criteria: Current member of RTB and National AALAS. Demonstration of commitment to innovation and ingenuity in contributions to the field of laboratory animal science. Participation in learning or information programs. Demonstrated participation in developing, improving, implementing, or providing training and education programs. Demonstrated interest in attaining additional education and training preferred. All considerations being equal, candidates having AALAS certifications will be given priority.

Managers Award (Allentown Caging Systems)

Plaque & \$250

Criteria: LAT or AALAS-certified LATG and/or Registered CMAR working as a manager or supervisor of a Research Animal Facility. Individual must be an active member of RTB AALAS and National AALAS Member.

Clayton Cisar Memorial Award (RTB AALAS Executive Council)

Plaque

Criteria: To recognize contributions of an individual to the Research Triangle Branch and to the humane treatment of animals used in biomedical research and teaching. This is not necessarily an annual award, but is awarded based on nomination from the general membership. Selection of the recipient for the award is made by the Executive Council. Individual must be an active member of RTB AALAS.

Facility Fun

For a morale event, NC State hosted LAR Olympics within the department. Teams competed in several different games including herding sheep (balloons), a species race, hungry hungry hippo toes, and my favorite, a PPE race with different tasks each team member had to complete that mimicked something we frequently do in the facility. It was very hot that day, so we ended with a nice pot luck ice cream bar!



2018 RTB Trivia Night

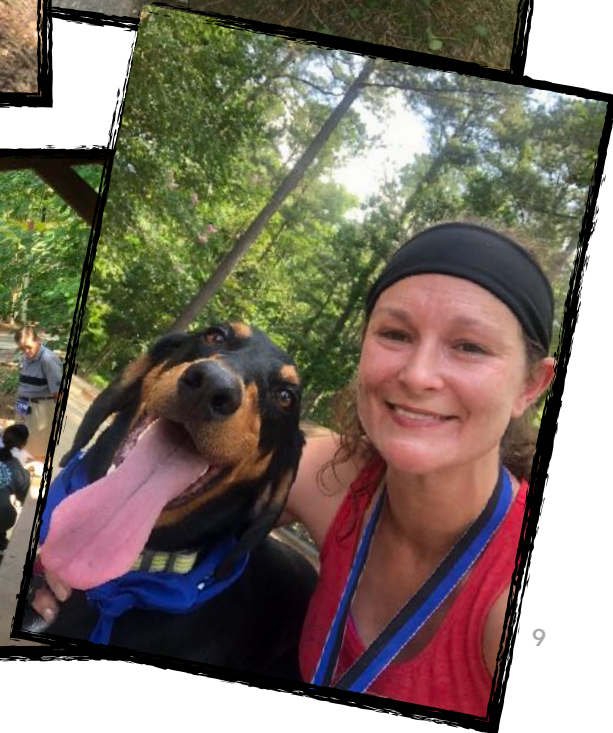
Our annual family feud style trivia night at NIEHS was another hit! Congrats to our winning teams! Please plan to come out next year-there is always good food and socializing, as well as some friendly competition.



Quarter 3 2018

HAH 5K

The 2nd annual Homes for Animal Heroes 5K was another huge success! RTB was the top fundraising team and had the top two individual fundraisers as well! If you didn't join us this year, please come out next year. It's a great cause and is a lot of fun. We had a huge pack of dogs as well as a cat and a guinea pig!





Homes for Animal Heroes coming to NC!

BE A HERO FOR OUR HEROES

Homes for Animal Heroes is a foster-based program that relies on volunteers to acclimate our canine heroes to residential living. Each foster volunteer plays a key role in preparing our precious heroes for loving, forever homes. If you love dogs, have experience training them, and appreciate the importance of biomedical research, then fostering through Homes for Animal Heroes may be for you!

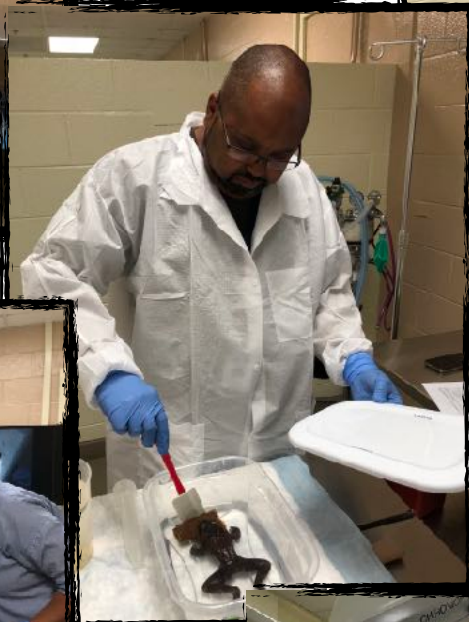
Please reach out to the Regional Coordinator in your state for more information: hah.nc@naiaonline.org



You can also learn more about us on Facebook or through our website:
www.facebook.com/homesforanimalheroes | animalheroes.naiaonline.org

2018 Frog Wet Lab

Quarter 3 2018

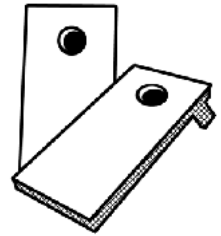


2018 Golf and Cornhole Tournament

Cornhole winners

1st Place:
Robert Parker
Arnette Williams

2nd Place:
Adam Bakowski
Carrie Kanaby



Longest Drive Men: Ray Goolsby
Longest Drive Women: Lorie Boyd
Closest to the Pin Men: Zack Heyl
Closest to the Pin Women: Lena Perdue

Thank you to all our
golf and corn hole
sponsors! Another
huge shout out to all
our participants!
Thanks to you, we
raised 2k to donate
to Homes for Animal
Heroes!!
Please join us next
year so we can
continue to make a
difference.

A Flight

1st Place:
Walter Byrd
Frank Butler
Ray Goolsby
Ralph Brown

2nd Place:
Baxton Vaughn
Jon Ledford
Tom Ross
Wayne DeSantis

3rd Place:
Rick Weaver
Brad Pittman
John Pittman
Dale Gerard



B Flight

1st Place:
Lorie Boyd
Keith Murphy

2nd Place:
Kelly Ham
Jesse DeGraff
Jason Raynor

3rd Place:
Sarah Rovezzi
Johnny Wilson
Kate Ewing
Bill Wade

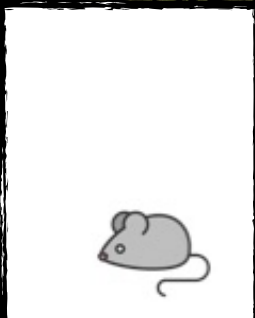
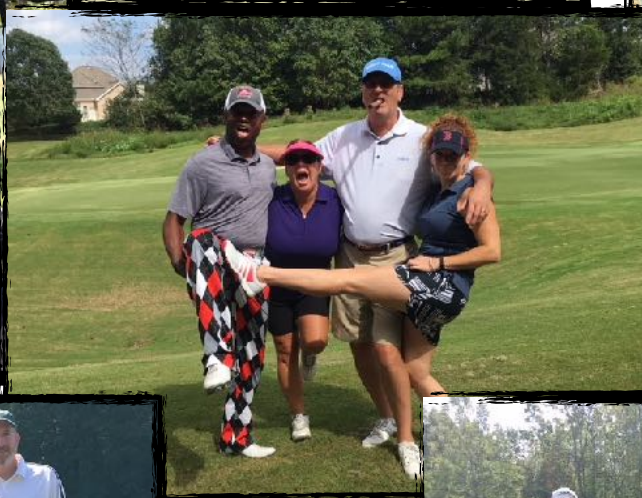
Quarter 3 2018



Quarter 3 2018



Quarter 3 2018



Quarter 3 2018



Quarter 3 2018

Vote for RTB AALAS in the
AALAS Foundation “Set Sail with Lab Animal Science” contest!



Given that the 2018 AALAS National Meeting is in Baltimore, Maryland, this year’s AALAS Foundation Fundraiser is to design and decorate a wooden sailboat!

The “**Triangler**” is ready to sail its way to victory and bring home an RTB win for the **3rd** year in a row!

“Fan Favorite” votes can be cast for FREE on Facebook in the AALAS Foundation’s “Set Sail with Lab Animal Science” Facebook photo gallery. Simply click on the “Triangler” and “Like” it by **11:00 am CST, October 31st, 2018**.

Votes for “Branch Winner” can be cast online or in-person at the meeting beginning **October 1st**. These “votes” are actually a monetary donation to the AALAS Foundation.

Winners will be announced at the Appreciation Reception to be held October 31st, 2018 at the AALAS National Meeting in Baltimore, MD.

Quarter 3 2018



For this quarter, the “puzzle” is a find it. What you are looking for is this:

Count the number of times “Marvolo the Mouse” appears in this newsletter and email your response to Emily @ ecbutler@email.unc.edu. Responses are due by October 15, 2018



Spotlight: Executive Council

Jennifer St Laurent, Communications:

Facility/Employer: UNC-Chapel Hill

Job Title: Transportation Coordinator

What is your favorite movie?

This is 40

What is your favorite dessert?

Pistachio Froyo

How did you get into the field?

I received a job opportunity letter from Yale University.

Who were your mentors?

I have learned something from everyone I have met in research. Choosing specific people over the past 13 years in this field would be hard for me.

What advice do you have for others just beginning their animal science career? Just to be proud of their contributions and know that they are making a difference. Take every chance to learn from colleagues, labs, managers. There are so many different areas that work together. Having knowledge of as many moving parts allows you to become a more valuable team member.



Ashley Foley, Local Arrangements:

Facility/Employer: UNC-Chapel Hill

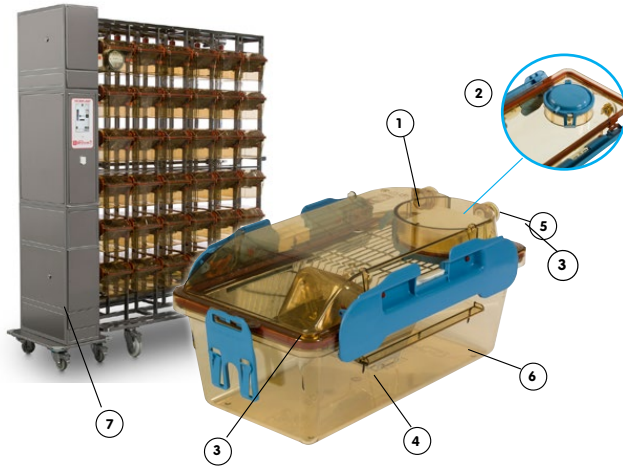
Job Title: Research Support Technician-Colony Management Services

What is your favorite dessert? Warm brownies fresh from the oven with a scoop of vanilla ice cream!

How did you get in this field? I got an e-mail two months before I was to graduate from graduate school from my advisor. It was advertising a husbandry tech position at a local institution and I replied that I would be interested in the job and learning more about research. I figured I would give it a chance! I interviewed a couple of weeks later and here we are today!

What is the most rewarding aspect of your career? I think the most rewarding part of my career is working with an investigator on a big project and finally making that breakthrough discovery. Seeing research projects move forward and advance, knowing that I had a part in it, is a pretty cool thing.

SEVEN REASONS WHY MANY FACILITIES PREFER THE ISO CAGE



1. **H14** grade HEPA filter for best protection
2. **Encased filter on the inside** to prevent chewing
3. **Tight seal** - silicon gasket around the cage and double gasket on self-closing nozzles
4. **Made of PPSU** - 8-year guarantee of durability
5. **No air drafts at animal level** - nozzles at the top
6. **Positive pressure of 80Pa inside the cage** for up to 20-30 min once removed from the rack
7. **No vibration into the cages** - AHU on the side with a 24-hour battery backup



CONTACT Baxton Vaughan at bvaughan@tecniplastusa.com

Aquatic Solutions for Facilities of Any Size



Zebrafish | Xenopus | Other species

- Housing systems
- Standard & customized CLS
- Facility design consultation
 - Breeding systems
- Service & support

- Start-up Facilities • Expansion
- Renovation • Brand New Building



CONTACT Baxton Vaughan at bvaughan@tecniplastusa.com



A clear and simple caging solution.

The **Innovive Disposable IVC Rodent Caging System** is a comprehensive animal husbandry solution for mice and rats that features our high-performance IVC racks and single-use, disposable cages.

Our low cost disposable cages arrive ready to use under the hood and can be easily recycled, eliminating the hassle of cage washing procedures. We offer the convenience of pre-bedded cages, pre-filled water bottles, and a full service recycling program, so you can focus on what's important: **the science.**

For more information, contact your local sales rep:

Warren Riley – (858) 309-6653 / warren@innovive.com

innovive

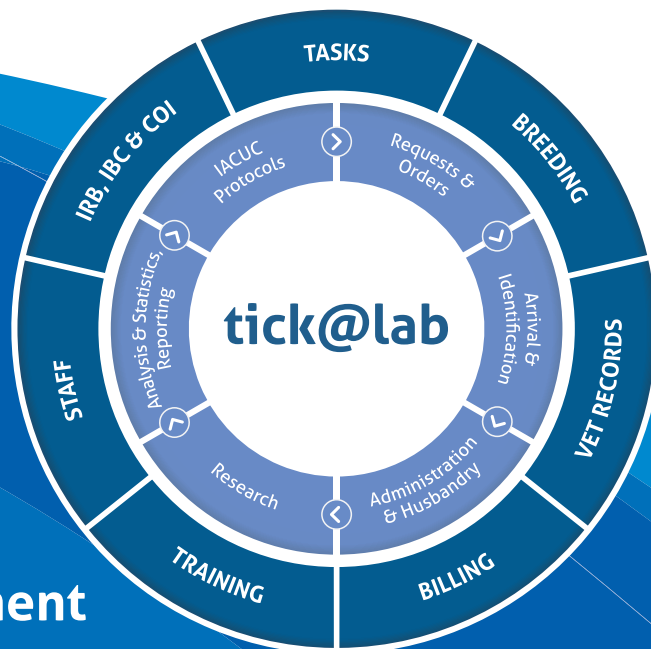


Quarter 3 2018

a-tune
make IT simple

tick@lab

Regulatory Compliant Software for Animal Research Facilities

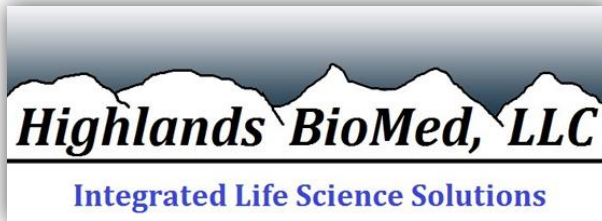


- IACUC
 - Protocol Management
 - Capacity Planning
 - Vet Records
 - Breeding
- ...and much more

a-tune software Inc.

19621 FM 1431, Ste 402
Jonestown, TX 78645

p: (512) 243-8539
www.a-tune.com



WWW.HIGHLANDBIOMED.COM



Cage Washers, Gas Decon, Bedding Management, Bottle Fillers

EFFICIENT, TOUGH and RELIABLE

WWW.LYNXPG.COM



QUALITY WITHOUT COMPROMISE

Autoclaves for Small Labs to the Largest Bulk Units

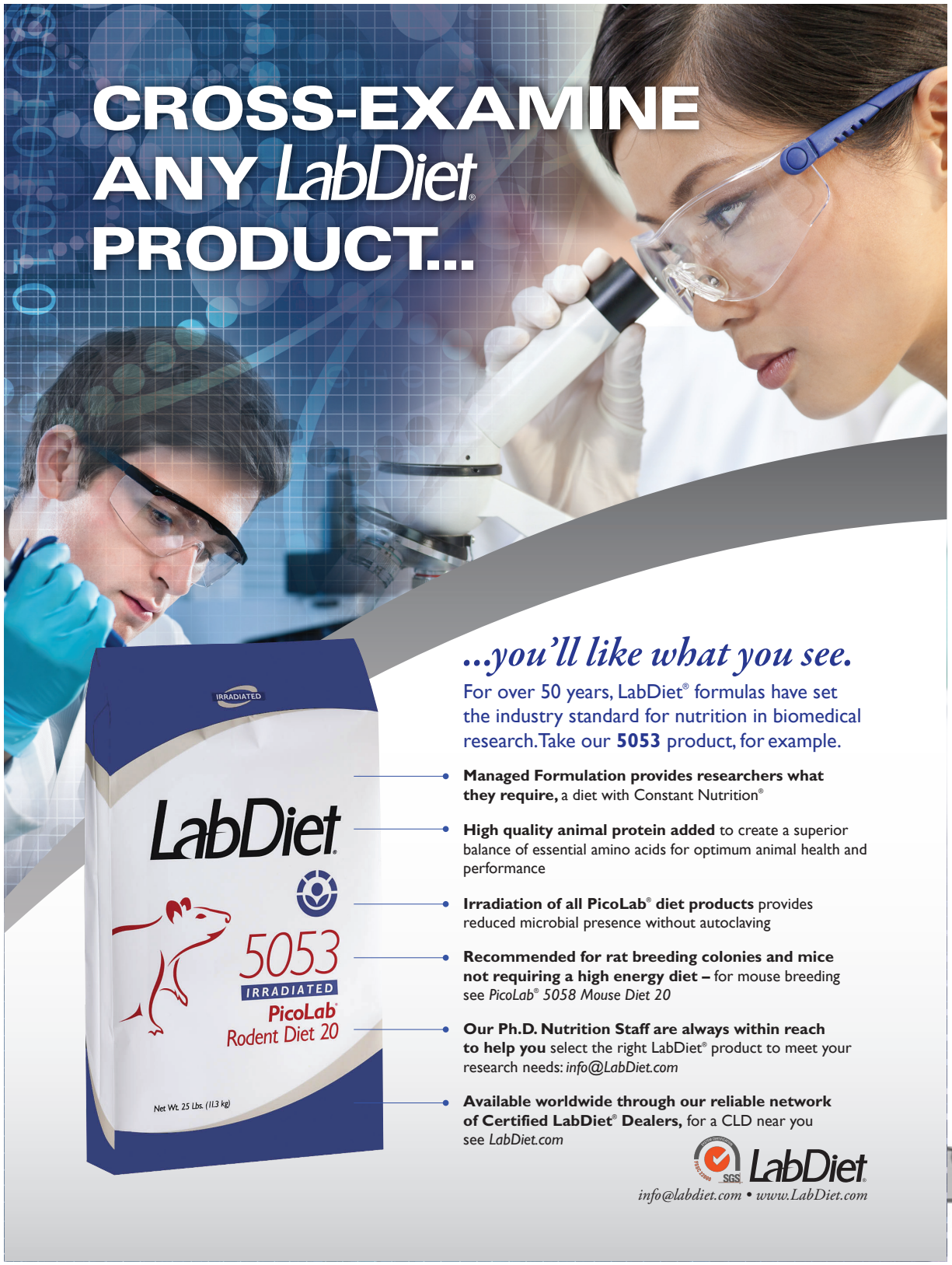
www.tuttnauerusa.com

Steve Blevins, BS, RLATG

Ph: 423-677-8624

info@highlandsbiomed.com

CROSS-EXAMINE ANY *LabDiet*[®] PRODUCT...



...you'll like what you see.

For over 50 years, LabDiet[®] formulas have set the industry standard for nutrition in biomedical research. Take our **5053** product, for example.

- **Managed Formulation provides researchers what they require**, a diet with Constant Nutrition[®]
- **High quality animal protein added** to create a superior balance of essential amino acids for optimum animal health and performance
- **Irradiation of all PicoLab[®] diet products** provides reduced microbial presence without autoclaving
- **Recommended for rat breeding colonies and mice not requiring a high energy diet** – for mouse breeding see *PicoLab[®] 5058 Mouse Diet 20*
- **Our Ph.D. Nutrition Staff are always within reach to help you** select the right LabDiet[®] product to meet your research needs: info@LabDiet.com
- **Available worldwide through our reliable network of Certified LabDiet[®] Dealers**, for a CLD near you see LabDiet.com



info@labdiet.com • www.LabDiet.com

HIGH EFFICIENCY

RACK & CABINET WASHERS

**OPERATIONAL EFFICIENCY
FOR MANY LEVELS**

**ATLANTIS RACK WASHER
OCEANUS CABINET WASHER**

- Greater performance and throughput
- Reduced energy and utilities consumption
- Less operational footprint



TECNIPLAST

CONTACT Baxton Vaughan at bvaughan@tecniplastusa.com

CALL for
information

Run smooth. Manage smart.

1.877.669.2243

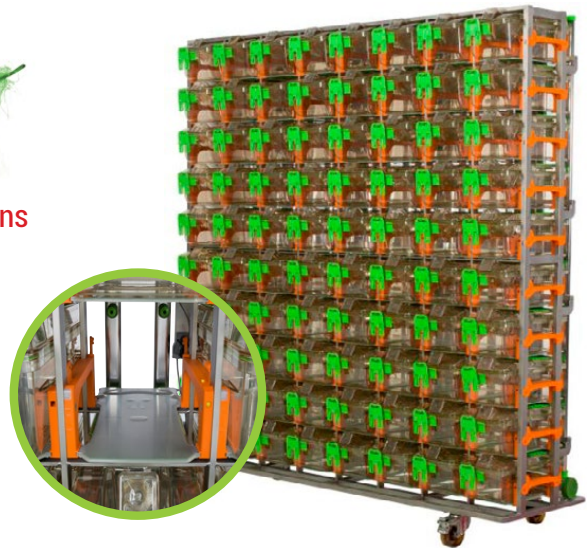


DVC Lite
CAGE MANAGEMENT SYSTEM



DVC Lite adds efficiency to your daily operations

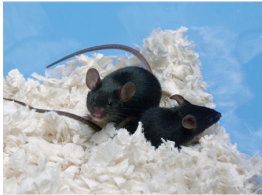
- Reduce labor & bedding costs
- Find & identify cages quickly
- Assign cage space
- Issue accurate billing
- Improve animal welfare
- Prevent animal loss
- Detect animal activity (DVC full version)



TECNIPLAST

CONTACT Baxton Vaughan at bvaughan@tecniplastusa.com

Quality Bedding & Enrichment With More Options and Solutions



Cellu-nest™

Premium cellulose bedding option that is soft, clean, and comfortable. Allows for natural burrowing and nesting behaviors, without having to add any additional nesting or enrichment material.



ALPHA-dri® +PLUS

Composed of ALPHA-dri® and twisted multi-layered paper that is cut into short mini-rolls. Once in the cage, rodents unfurl and manipulate the mini-rolls into fluffy nests.



Shepherd Shack®

Shepherd Shack® structures provide an activity center for mice to climb on, chew and shred to build a nest. They form an excellent foundation for nest building when combined with Enviro-dri® nesting material.



Enviro-dri®

In a recent study Enviro-dri® encouraged mice to build the highest quality nests. Just a handful of Enviro-dri® added to your standard bedding material is all your rodents need to build a quality dome-shaped nest.

For information, prices or samples of our enrichment products or other specialty products visit our website, www.sponline.com and locate your nearest Shepherd distributor, or call toll-free 1-800-382-5001.

P.O. Box 64 Watertown, TN 37184
TEL: 800-382-5001 • FAX: 615-237-3267
www.sponline.com
© 2017 Shepherd Specialty Papers, Inc.



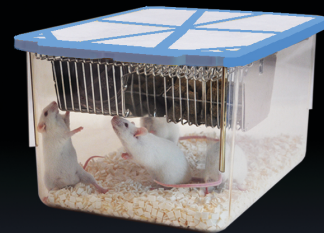
Maxi-Miser® Caging Systems The Industry's Largest Selection of IVC Caging Sizes



Thoren Maxi Miser® IVC Caging Systems feature:

- 9 mouse cages
- 4 rat cages
- 1 Guinea Pig cage

Thoren's modular racks and cages are designed to provide maximum density and interchangeability of cages on the same rack. The Maxi-Miser® Duplex Cages also provide the ideal housing for pairing mice and breeding. We offer 3 multi-species cages that are also interchangeable. Contact us and let us customize your housing needs.



THOREN

CAGING SYSTEMS, INC.

www.thoren.com • 570-455-5041

© 2018 Thoren Caging Systems, Inc.

**Proven Products.
Innovative Solutions.**



CLICK HERE



ALTERNATIVE DESIGN
MANUFACTURING & SUPPLY, INC.

800.320.2459 | info@altdesign.com

www.alternativedesign.com



Baxton VAUGHAN

Client Representative
cell 484 889 7158 | e-mail: bvaughan@tecniplastusa.com

Toll Free 877 669 2243 | Fax 484 875 0511

PO Box 1209, West Chester, PA 19380
www.tecniplastusa.com



Jon LEDFORD

Regional Sales Director
cell 484 798 7687 8450 | e-mail: jledford@tecniplastusa.com

Toll Free 877 669 2243 | Fax 484 875 0511

PO Box 1209, West Chester, PA 19380
www.tecniplastusa.com



Sarah Rovezzi

Technical Sales Consultant

Allentown, Inc.
165 Route 526, PO Box 698
Allentown, NJ 08501-0698

Cell: 609-286-4463
Corp. Office: 800-762-2243
Fax: 609-259-0449
srovezzi@allentowninc.com
www.allentowninc.com



Johnny Wilson

Technical Sales Consultant – Southeast

Allentown, Inc.
165 Route 526
Allentown, NJ 08501

609-259-7951
800-762-2243
Cell: 610-701-1878
Fax: 609-259-0449
jwilson@allentowninc.com
www.AllentownInc.com

Allentown, Inc. | Allentown Europe | Allentown France | Allentown Deutschland | Allentown Italia

Allentown, Inc. | Allentown Europe | Allentown France | Allentown Deutschland



Lab Bedding Products

Colleen Kander
Regional Sales Manager

(419) 377-3639 Cell
(419) 891-6539 Fax

521 Illinois Avenue
P.O. Box 119
Maumee, OH 43537

colleen_kander@andersonsinc.com
www.andersonslabbedding.com



Priority One Services

your Project, our People, one Priority!

Barbara V. Rodriguez, B.S., RLATG, CMAR
Operations Administrator

6600 Fleet Drive, Alexandria, VA 22310
Office: (703) 778-3763 Fax: (703) 971-5440
Mobile: (301) 806-7921
brodriguez@PriorityOneServices.com
Website: www.PriorityOneServices.com



Maria Cariglia

Account Manager

1 Kelley Square, Worcester, MA 01610

508.755.2243, x118; Fax:

508.755.2249

mariac@labexofma.com;

Service & installation of research equipment

SOUTHEASTERN SERVICE, INC.

5516 Antioch Road
Oxford, NC 27565
Email: seastern@embarqmail.com
www.southeasternserviceinc.com

Norm Hoover
919-690-1677

Quarter 3 2018

Validated Delivery Solutions
Call Center: 877-355-3773

Eric A. Syversen
VP, Animal Transportation

P: 443-878-5514
F: 877-854-1451
E: eric@vcgrc.com
www.validatedcourier.com

VALIDATED DELIVERY SOLUTIONS

Research Animal Delivery Done Right and At the Right Price

THOREN
CAGING SYSTEMS

Andy Minenna
International Sales Manager

Over 60 Years of Innovation
Quality - Performance

Mobile: 732.310.5432
Fax: 570.454.3500
andym@thoren.com
www.thoren.com

815 West Seventh Street
Hazleton, PA 18201
phone: 570.455.5041 ext. 206

LabDiet
Your work is worth it.

TestDiet
Fresh from our lab to yours.

Sarah Roberts
ACCOUNT MANAGER



P.O. Box 449 | Westfield, IN 46074
MOBILE: 765-914-9618 | FAX: 651-234-8703
EMAIL: Sarah.Roberts@LabDiet.com | WEB: LabDiet.com | TestDiet.com

P +1 512 2438539
M +1 512 5895431
Skype pat.guider1
pguider@a-tune.com
www.a-tune.com

a-tune software INC.
19621 FM 1431, Suite 402
Jonestown, TX 78645
USA

Regulatory Compliant software for IACUC, IRB, IBC and Facility Management
J. Patrick Guider Jr., BA, MPA
General Manager



Ancare
Better Products. Better Science.

Nancy McCormick
Regional Sales Manager

484.593.0730
nancy@ancare.com

800.645.6379
516.781.0755

www.ancare.com



Pam Huber
Director of Client Services

Phone: +1-315-587-2295 ext. 1117
Fax: +1-315-587-2109
phuber@marshallbio.com

Marshall BioResources
5800 Lake Bluff Road
North Rose, NY 14516

www.marshallbio.com

LABRepCo
One Company • Many Solutions

www.labrepco.com

David Freeman
Sales Representative
david.freeman@labrepco.com


101 Witmer Road, Suite 700
Horsham, PA 19044 USA
Toll Free: 1.800.521.0754, ext. 190
Tel: 215.442.9202
Fax: 215.442.9202

LABRepCo
One Company • Many Solutions

www.labrepco.com

Carrie Kanaby
NC/SC Area Representative
carrie.kanaby@labrepco.com

101 Witmer Road, Suite 700
Horsham, PA 19044 USA
Toll Free: 1.800.521.0754, ext. 172
Tel: 919.349.7804
Fax: 215.442.9202



Mark Smith
Life Science Products, Inc.
Vice President

Direct 800-638-9874 X 315
 Mobile 301-717-1341
 mark@lspinc.com



John Racine
 Director, Business Development

516-881-7386
 john.racine@phse.com

www.phse.com


PHSE USA
 2016 Linden Blvd., Suite 1
 Elmont, NY 11003

Toll Free 877-818-PHSE
 Mobile 516-220-8988
 Fax 516-284-6854



John Nelson
 Optimize Courier
 Sr. Account Manager

+1 (336) 300-5662
 john.nelson@optimize-courier.com



Morgan Holmes
 Sales Director, Southeast
 Research Models and Services

T +1 919 400 1418
 E morgan.holmes@envigo.com

Envigo
 8520 Allison Pointe Boulevard, Suite 400
 Indianapolis, IN 46250
 envigo.com



SHEPHERD | SPECIALTY PAPERS

RENE KETELSEN
 Regional Sales Manager

Phone (615) 449-3398
 Cell (615) 239-4200
 Fax (615) 523-1783
 rketelsen@ssponline.com
 www.ssponline.com

P.O. Box 64
 112 Tennessee Blvd.
 Watertown, TN 37184
 Phone (800) 382-5001
 Fax (615) 237-3267



Peggy Nahorski
 Account Manager
 peggy@altdesign.com

P.O. Box 6330
 3055 Cheri Whitlock Drive
 Siloam Springs, AR
 72761-6330

314-308-6999 Cell
 800-320-2459 Corp.
 479-524-4125 Fax

www.altdesign.com

Certified to ISO 9001



Arnie Markwald
 North American Sales Manager

800 558 5913
 262 492 7258 Cell
 262 534 5181 ext 255
 262 534 5184 Fax

arnie.markwald@edstrom.com
 819 Bakke Avenue
 Waterford WI 53185
 www.edstrom.com

Certified to ISO 9001



Chip Ahrens
 Southeast Sales Consultant

800 558 5913
 352 213 0745 Cell

chip.ahrens@edstrom.com
 819 Bakke Avenue
 Waterford WI 53185
 www.edstrom.com

Quarter 3 2018

 <p>Delivering Solutions™ ♦ Nutritional ♦ Enrichment ♦ Medicated ♦ Special Needs</p> <p>Karen Froberg-Fejko LATg, VMD President</p> <p>Phone: 800-996-9908 ext. 135 Email: kfroberg@bio-serv.com</p>	<p>800-996-9908 (US and Canada) 908-284-2155 (International) Fax: 908-284-4753</p> <p>3 Foster Lane, Suite 201 Flemington, NJ 08822</p> <p>ISO 9001:2008 Certified www.bio-serv.com</p>	 <p>Delivering Solutions™ ♦ Nutritional ♦ Enrichment ♦ Medicated ♦ Special Needs</p> <p>Karena Thek MBA, CMAR National Sales Manager</p> <p>Cell: 908-255-9145 Phone: 800-996-9908 ext. 111 Email: kthek@bio-serv.com</p>	<p>800-996-9908 (US and Canada) 908-284-2155 (International) Fax: 908-284-4753</p> <p>3 Foster Lane, Suite 201 Flemington, NJ 08822</p> <p>ISO 9001:2008 Certified www.bio-serv.com</p>
--	---	--	---

<p>HEATHER GRAY Regional Account Specialist</p> <p>919-536-8152 901-507-0480 Toll-free 888-321-2113 x 143</p> <p>hgray@transnetyx.com www.transnetyx.com</p> <p>8110 Cordova Rd. Suite 119 Cordova, TN 38016</p>  <p>Serving research. Saving time.</p>	 <p>Ella Torian 207.288.1404 t 207.266.8685 m</p> <p>Opportunity Development Manager I Southeast</p> <p>ella.torian@jax.org www.jax.org</p>
--	---



Wayne DeSantis
 Vice President
 MATACHANA USA CORP.

300 North Pottstown Pike, Suite 110
 Exton, PA 19341, USA
wdesantis@matachana.com
 (484) 873-2763 x104 | (516) 848-4784
 Toll Free (877) 215-9671 x104 | Fax (484) 369-4951

www.matachana.com



www.innovive.com

Warren Riley
 Sr. Account Representative, MW
warren@innovive.com

Innovive
 Indianapolis, IN

M (317) 501-4341
 P (858) 309-6653
 F (858) 309-6621

Vendor members, don't see your business card listed? All vendor members are entitled to a business card space in our newsletter and on our website, so please send a current business card to info@rtbaalas.org so our members know how to reach you. Interested in a half or full page ad? Please contact us for pricing.