



Research Triangle Branch
American Association for
Laboratory Animal Science

Quarter 4 2019

NC State
gingerbread
house
building



FFA day at NC State



Table of Contents:

President's Message

Executive Council 2019

Technician Achievements

Upcoming Events

"Since Our Last Edition"

Vendor Spotlight

President's Message:

RTB Members,

As the year comes to a close, I just want to thank everyone for their participation and support. We have had several successful events and outreach projects, including the District IV meeting, the Homes for Animal Heroes 5K, our 16th annual golf tournament, 3rd annual cornhole tournament, and our 2nd annual FFA day. All these events are only made

possible from the generous vendor sponsors and participation from our members. We are always trying to find different events or opportunities to offer, so if you have any suggestions or input, please reach out to us!

The most recent event was the FFA day that RTB hosted at NC State College of Veterinary Medicine. We had a total of 80 students and advisors from 12 different North Carolina schools. At the event, the students got to practice suturing, tour the large animal hospital, MRI suite, and learn about the field of laboratory animal science via conference style lectures and a career panel. This is monumental growth for this outreach event compared to last year's event, where we only had one school and 10 students participate.

Don't forget, the RTB Awards Banquet is February 6, 2020-make sure to come and support your colleagues and welcome the new President! It has been an honor and privilege serving as your 2019 RTB President.

Emily Butler



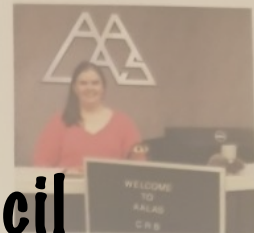
2019 Executive Council



Emily Butler
(President)



Emily Weston
(President-Elect)



Lena Perdue
(Secretary)

President- Emily Butler

President Elect- Emily Weston

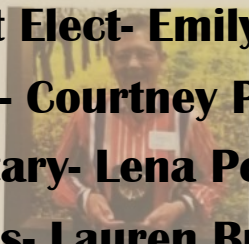
Treasurer- Courtney P. Nesline

Secretary- Lena Perdue

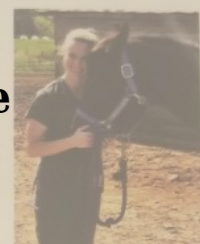
Programs- Lauren Buslinger



Courtney Nesline
(Treasurer)



Joy Brinkerhoff
(Programs)



Lauren Buslinger
(Programs)

Vendor Liaison- Nancy McCormick

Newsletter- Allison Geiner

Local Arrangements- Ashley Foley

Awards- Morgan Holmes

Membership- Janet Steele

Webmaster- Janet Steele

Nominations- Julie Kent

Communications- Lena Perdue

Programs- Joy Brinkerhoff



Nancy McCormick
(Vendor Liaison)



Allison Geiner
(Newsletter)



Morgan Holmes
(Awards)



Janet Steele
(Web/Membership)



Julie Kent
(Nominations)



Ashley Foley
(Local Arrangements)

Technician Achievements



Duke
Logan Moore- ALAT
Tayler Baker- ALAT
Amesha Crudup- ALAT
Eleanor Corcoran- ALAT
Nicole Palmer- ALAT
Timothy Hutchinson- ALAT
Danielle Shearin- ALAT

UNC
Natallia Riddick-ALAT
Tony Williams-ALAT
Robert Williams-ALAT
Liana Philpott-LAT
DaVetta Pulley-LAT
Sherie Quillen-LATG

NC State
Mark Curley, RLAT

Social Media

Quarter 4 2019



How many of you are on social media? Did you know that RTB AALAS has a social media presence? Check out our page: RTB A.A.L.A.S. There are a number of other organizations that are on Facebook as well! Some of the organizations you might want to add to your Facebook feed are listed below.

Homes for Animal Heroes

Homes for Animal Heroes (HAH) is a national program dedicated to rehoming retired research animals, mainly dogs, and sharing the facts about the critical role animals in research play in curing disease. HAH is building a network of dog experts that can effectively work with research institutions to rehome retired research dogs in every state across the country, one location at a time. Our goal is to permanently rehome these animal heroes into loving homes through a comprehensive foster-based program.

<https://www.facebook.com/homesforanimalheroes/>

Understanding Animal Research

This page regularly shares a weekly roundup of animal based research results called "This week in animal research." The features have pictures and a link to the Understanding Animal Research page. The page then links to each of the six studies featured. It's easy to share these to your own feed to help your FB friends know what discoveries animal research has led to.

<http://www.facebook.com/UnderstandingAnimalResearch>

The Foundation for Biomedical Research

This is the Facebook page for the well-known advocacy group. They regularly share items related to animal research that can help keep you in the know about what's happening in biomedical research.

<http://www.facebook.com/FBResearch>

AALAS

Our parent organization is on Facebook! Their page feed has news about deadlines and changes going on at AALAS and occasional features on services and products AALAS offers.

<http://www.facebook.com/pages/AALAS/221279445386>

The AALAS Foundation

The AALAS Foundation is very active on Facebook, hosting part of the Share that you Care campaign on Facebook and regularly posting updates on ways to work on outreach.

<http://www.facebook.com/aalasfoundation>



BE A HERO FOR OUR HEROES

Homes for Animal Heroes is a foster-based program that relies on volunteers to acclimate our canine heroes to residential living. Each foster volunteer plays a key role in preparing our precious heroes for loving, forever homes. If you love dogs, have experience training them, and appreciate the importance of biomedical research, then fostering through Homes for Animal Heroes may be for you!

Please reach out to the Regional Coordinator in your state for more information: hah.nc@naiaonline.org



You can also learn more about us on Facebook or through our website:
www.facebook.com/homesforanimalheroes | animalheroes.naiaonline.org

NC Regional Coordinator :Robin Raymer
Email: hah.nc@naiaonline.org

RTB AALAS 2020 Events

The events will be announced at the awards banquet
February 6th.

RTB AWARDS CATEGORIES & CRITERIA

Rookie of the Year (Vendor – changes yearly)

Plaque & \$100

Criteria: 1 year or less working in an animal facility. Current membership in RTB AALAS.

Bio-Serv Enhancement or Improvement of Animal Welfare Award (Bio-Serv)

Plaque & \$250

Criteria: Member of RTB AALAS. Person nominating must also be a member of RTB AALAS. To recognize contributions of an individual who have contributed a positive impact to enrich, enhance, and/or improve the lives of animals or the environment they work in with regard to animal welfare.

Purina Prolab Award (Purina Mills)

Plaque & \$100 plus \$50 to National AALAS Foundation Education Committee

Criteria: Individual must have daily contact with animals and demonstrate positive attitude toward animal welfare, performance excellence, pursuit of knowledge in the field of laboratory animal care, and innovative approaches to husbandry-related problems. Formal education is not considered. Current membership in RTB AALAS.

Research Technician Award (Envigo)

Plaque & \$250

Criteria: LAT or AALAS-Certified Technologist working with the technical aspects of a research project. Current membership in RTB AALAS.

Technician of the Year Award (RTB AALAS)

Plaque & \$250. Winner of this award is nominated for the National Technician of the Year award subject to National AALAS stipulations.

Criteria: LAT or LATG who is involved in RTB AALAS. Current membership in RTB AALAS.

President's Award (Charles River)

Plaque & \$500

Criteria: ALAT or LAT, not at a supervisory level, who exemplifies outstanding dedication and service to the field of Laboratory Animal Care. Current membership in RTB AALAS.

Innovation Award (Tecniplast)

Plaque & \$250

Criteria: Current member of RTB and National AALAS. Demonstration of commitment to innovation and ingenuity in contributions to the field of laboratory animal science. Participation in learning or information programs. Demonstrated participation in developing, improving, implementing, or providing training and education programs. Demonstrated interest in attaining additional education and training preferred. All considerations being equal, candidates having AALAS certifications will be given priority.

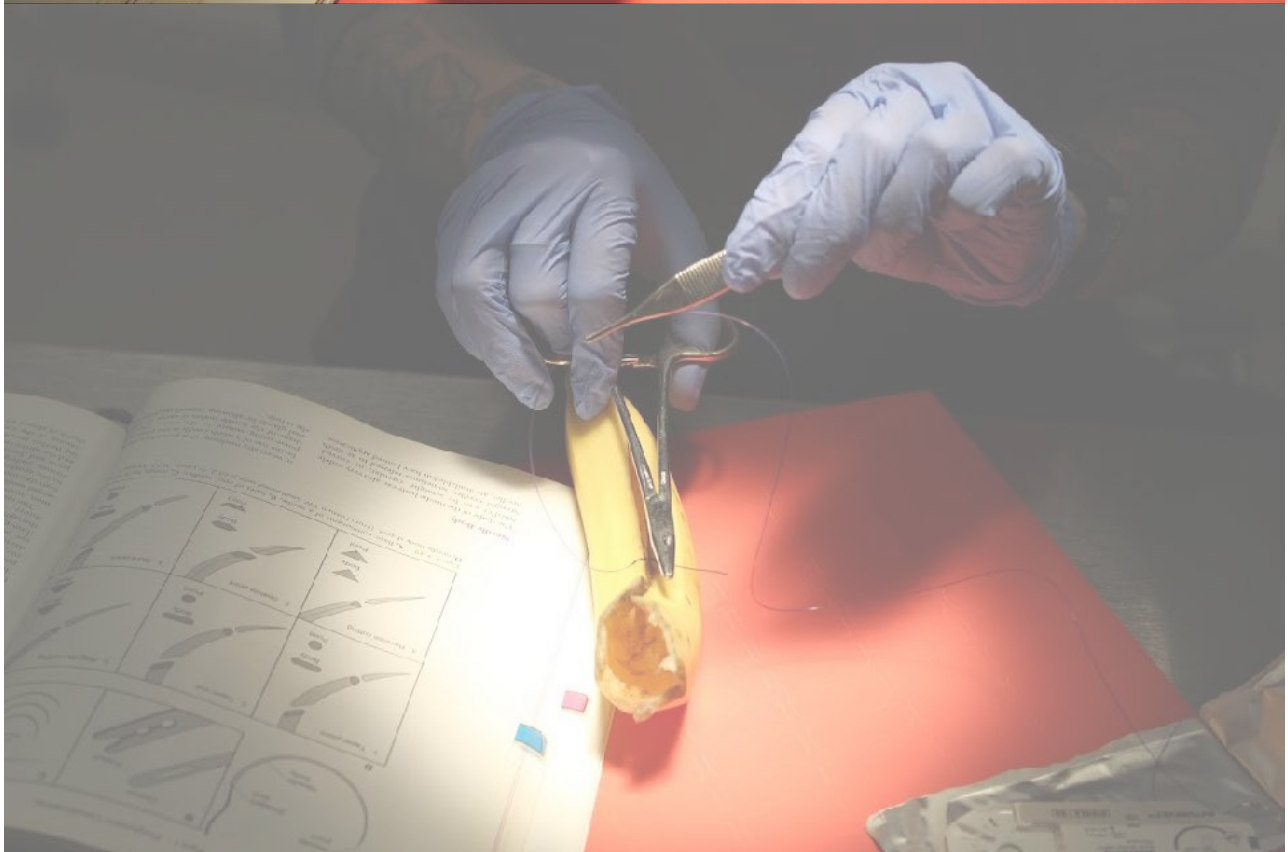
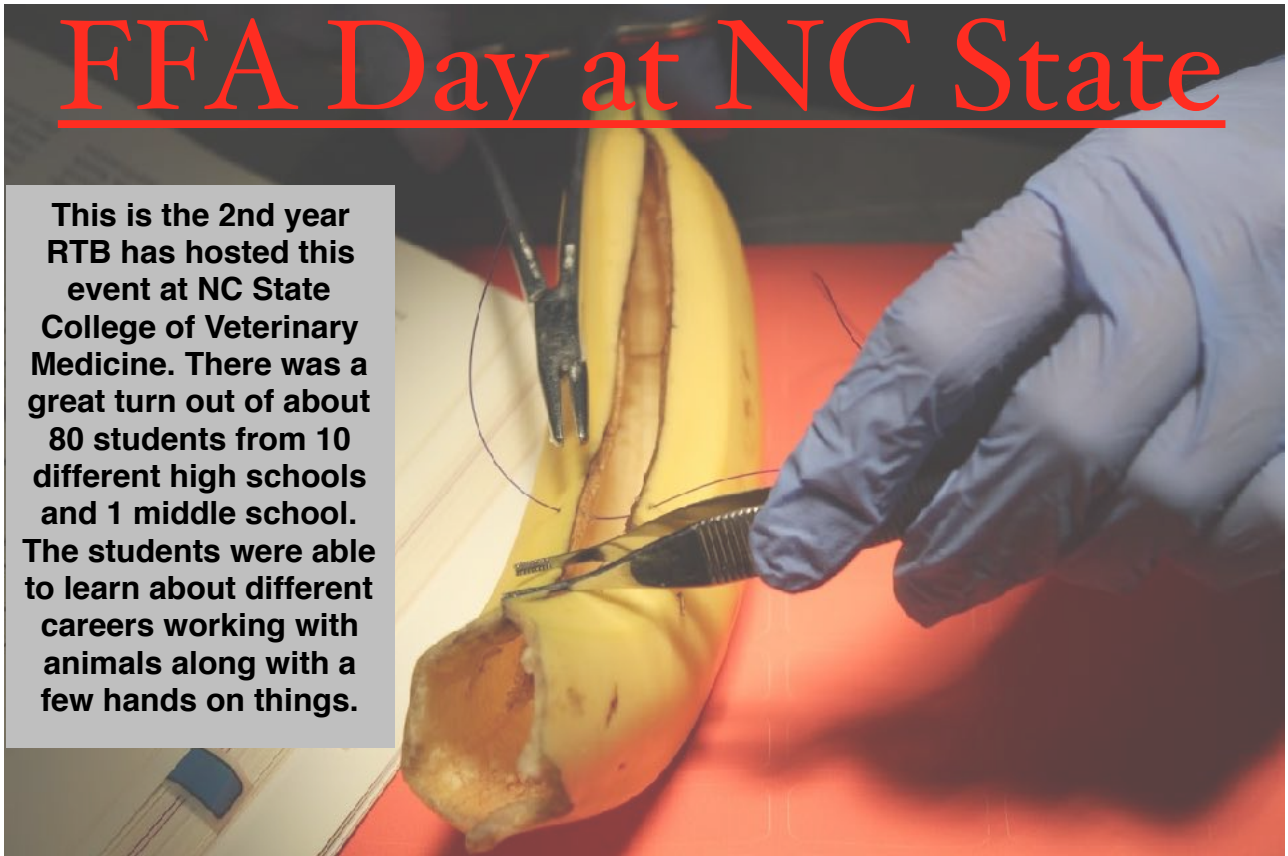
Managers Award (Allentown Caging Systems)

Plaque & \$250

Criteria: LAT or AALAS-certified LATG and/or Registered CMAR working as a manager or supervisor of a Research Animal Facility. Individual must be an active member of RTB AALAS and National AALAS Member.

FFA Day at NC State

This is the 2nd year RTB has hosted this event at NC State College of Veterinary Medicine. There was a great turn out of about 80 students from 10 different high schools and 1 middle school. The students were able to learn about different careers working with animals along with a few hands on things.



Quarter 4 2019



Quarter 4 2019



Quarter 4 2019



Quarter 4 2019



Quarter 4 2019

UNC Employee Recognition Lunch



Wake Forest Primate Center



Quarter 4 2019

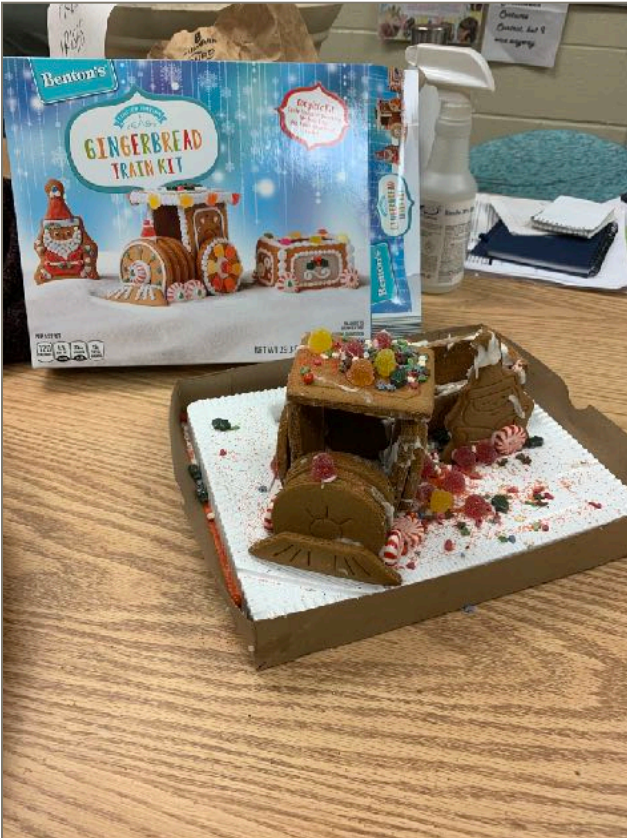
Social event after the tour



NCSU holiday scavenger hunt and gingerbread building



Quarter 4 2019



Quarter 4 2019

FFA/NCSU FOOD EVENT



RTB partnered with Heritage High School FFA and NC State's Agriculture Resource Economics Department to host this combined food drive. All of the food goes to stock the shelves at the "Feed the Pack" Food Pantry located on the NC State campus. The purpose of the pantry is to provide food to student and/or staff at low to no cost. In total, the groups raised 268 pounds of food. RTB collected food items at the Wake Forest Primate Tour.



Quarter 4 2019

Research Triangle Branch won the 1st Annual Public Outreach and Education (POE) Award. Programs Chair, Lauren Buslinger, accepted the award at National AALAS meeting in Denver, Colorado on behalf of RTB. This award recognizes a Branch's efforts in public outreach. Interested in getting involved with outreach efforts? Please contact info@rtbaalas.org



THE ALL-NEW
EMERALD IVC
HIGH DENSITY HOUSING



CONFIGURE THE RACK AND CAGES TO YOUR NEEDS

- 20% more density. 20% less footprint. Ask for details.
- Up to TWELVE rows on a standard footprint.
- Cage with new features. Two configurations: Standard and Prime.
- Perfect sealing without latches. Highly transparent.
- Prime model features self-hold lid "SmarTop" and embedded enrichment.



For information, contact Baxton at bvaughan@tecniplastusa.com

Quarter 4 2019



Care is at the heart of everything we do.



Science is the end goal that drives us.

Allentown[®]
Improving Life – it's in our DNA.®

Your trusted global partner
in life-saving research.



Integrity is the quality that defines Allentown.



A NEW DAWN

Animal research and compliance software. Reimagined.

With a brand new User Interface tick@lab leads you into the future of animal and compliance management software

a-tune.com/ticklab-new-dawn



T (512) 243 - 8539
sales@a-tune.com



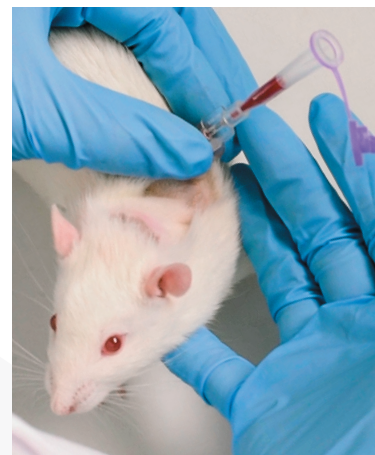
Poking hurts.
Be nice.



Are you ready to refine rodent blood sampling?

Combine Instech Vascular Access Buttons™ and PinPorts™ with Sarstedt capillary collection tubes for precise, pure blood samples with low stress and no needles. Nice.

Learn more and request a free sample pack at www.instechlabs.com/be-nice



INSTECH



Driven by customer needs

**Complete solutions for washing,
decontamination and sterilization processes**

Steelco's experience and understanding of the workflow within the smallest facility to the largest research centre enables us to offer the safest and most cost effective solutions for your staff to work in, enabling them to provide the cleanest conditions possible for animals in their care.

Our comprehensive range includes:

- Cabinet washer
- Cage and rack washer
- Tunnel washer
- Bedding dispensing and disposal systems
- Fully automated bottle lines
- Controlled environment
- Steam autoclave
- Loading racks



NEW HIGH EFFICIENCY

ARCADIA TUNNEL WASHER



15% Less Foot Print

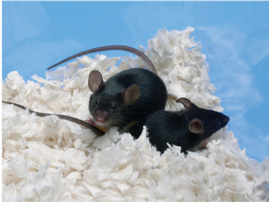
40% Reduced Water Consumption

- Increased loading capacity
- Ergonomic loading and unloading
- Automatic full-size sliding doors

TECNIPLAST

For information contact Baxton at bvaughan@tecniplastusa.com

Quality Bedding & Enrichment With More Options and Solutions



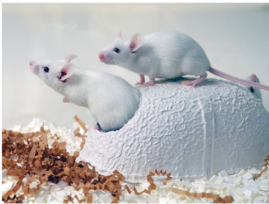
Cellu-nest™

Premium cellulose bedding option that is soft, clean, and comfortable. Allows for natural burrowing and nesting behaviors, without having to add any additional nesting or enrichment material.



ALPHA-dri®+PLUS

Composed of ALPHA-dri® and twisted multi-layered paper that is cut into short mini-rolls. Once in the cage, rodents unfurl and manipulate the mini-rolls into fluffy nests.



Shepherd Shack®

Shepherd Shack® structures provide an activity center for mice to climb on, chew and shred to build a nest. They form an excellent foundation for nest building when combined with Enviro-dri® nesting material.



Enviro-dri®

In a recent study Enviro-dri® encouraged mice to build the highest quality nests. Just a handful of Enviro-dri® added to your standard bedding material is all your rodents need to build a quality dome-shaped nest.

For information, prices or samples of our enrichment products or other specialty products visit our website, www.ssponline.com and locate your nearest Shepherd distributor, or call toll-free 1-800-382-5001.

P.O. Box 64 Watertown, TN 37184
TEL: 800-382-5001 • FAX: 615-237-3267
www.ssponline.com
© 2017 Shepherd Specialty Papers, Inc.



SHEPHERD | SPECIALTY PAPERS



- On-Site lab anesthesia machine service
-Meets IACUC and AALAS standards
- Industry leading in research anesthesia service with 30 years of experience
- Gold standard service protocols for all makes and models of anesthesia machines
- Certified registered veterinary technician service providers

Michelle McConnell, LVT, VTS
(Anesthesia & Analgesia)
Senior Service Technician/Sales Associate
michelle.mcconnell@vetamac.com

C: 561.317.1150

Servicing the Carolinas, southern Virginia,
and Georgia.

Visit our Web Store for easy online ordering!

www.vetamac.com



130 Roth Court, Suite 100 • PO Box 178 • Rossville, IN 46065

Quarter 4 2019

GETINGE ✱

Bret Zaro
Regional Account Manager, Southeast
Life Science Biomedical Division
Surgical Workflows, Americas

Mobile +1 770 722 2389
Fax +1 585 272 5116

Getinge
1150 Emma Oaks Trail, Suite 140
Lake Mary, FL 32746

bret.zaro@getinge.com
www.getinge.com

innovive
www.innovive.com

Warren Riley
Sr. Account Representative, MW
warren@innovive.com

Innovive
Indianapolis, IN

M (317) 501-4341
P (858) 309-6653
F (858) 309-6621

BRITZ & COMPANY
CAGING AND RESEARCH EQUIPMENT SOLUTIONS

Mike Bassett
Southern Regional Manager

307-331-4161
mpbassett@BritzCo.com
www.BritzCo.com
307-322-4040
307-322-4141
1302 9th Street
Wheatland, WY 82201

Service & installation of research equipment

SOUTHEASTERN SERVICE, INC.

5516 Antioch Road
Oxford, NC 27565
Email: seastern@embarqmail.com
www.southeasternserviceinc.com

Norm Hoover
919-690-1677

LabDiet
Your work is worth it.™

TestDiet
Fresh from our lab to yours.™

Sarah Roberts
ACCOUNT MANAGER

P.O. Box 449 | Westfield, IN 46074
MOBILE: 765-914-9618 | FAX: 651-234-8703
EMAIL: Sarah.Roberts@LabDiet.com | WEB: LabDiet.com | TestDiet.com



THOREN
CAGING SYSTEMS

Andy Minenna
International Sales Manager

Over 60 Years of Innovation
Quality - Performance

815 West Seventh Street
Hazleton, PA 18201
phone: 570.455.5041 ext. 206

Mobile: 732.310.5432
Fax: 570.454.3500
andym@thoren.com
www.thoren.com

ZEIGLER
nutrition through innovation

Tim Zeigler
Vice President-Sales & Marketing

717-677-3002 office
717-554-7188 cell
tim_zeigler skype
tim.zeigler@zeiglerfeed.com

Zeigler Bros., Inc.
400 Gardners Station Road
Gardners, PA 17324 USA
www.zeiglerfeed.com
sales@zeiglerfeed.com
717-677-6181 • 717-677-6826 fax

ZEIGLER
nutrition through innovation

Priscilla Shirley
Sales Specialist - Pet & Lab

717-677-3017 ext. 357 office
717-778-7017 cell
priscilla.shirley skype
priscilla.shirley@zeiglerfeed.com

Zeigler Bros., Inc.
400 Gardners Station Road
Gardners, PA 17324 USA
www.zeiglerfeed.com
sales@zeiglerfeed.com
717-677-6181 • 717-677-6826 fax



Mark Smith

*Life Science Products, Inc.
Vice President*

Direct 800-638-9874 X 315
Mobile 301-717-1341
mark@lspinc.com



Bryan Lee
Business Development Director

Covance Research Products
310 Swamp Bridge Road
Denver, PA 17517

Mobile: 608/301-6957
bryan.lee@covance.com

Fax: 410/418-4730



Improving Life – it's in our DNA.®

Sarah Rovezzi

Technical Sales Consultant

srovezzi@AllentownInc.com

M: +1 609 285 4463

ALLENTOWNINC.COM



PRIMUS
LYNX
SCIENTEK
CSI JEWETT

RICH M. APOLINAR
REGIONAL ACCOUNT MANAGER

402 344 4200 xt 3015 office
980 622 5618 cell
rmapolinar@spire-is.com

8719 S 135th St
Suite #300
Omaha, NE 68138

A Chalmers Group Company

Spire-is.com



a division of
Harvard Bioscience, Inc.

Keith Murphy

East U.S. Sales
Government Channel Manager

email: kmurphy@datasci.com
phone: 651.414.5606
fax: 651.414.5464
www.datasci.com

119 14th st NW, Ste 100 St. Paul MN 55112



Better Data. Better Science.

DATA SCIENCES INTERNATIONAL
119 14TH STREET NW, SUITE 100
ST. PAUL, MN 55112 USA
PHONE +1.651.414.5700
TOLL FREE 1.800.262.9687

Lorie Boyd
Senior Account Manager

LBOYD@DATASCI.COM
PHONE 651.414.5542
FAX 651.414.5464

WWW.DATASCI.COM



Jamie Newton

Account Manager - Mid-Atlantic Pharma/Biotech
IDEXX BioAnalytics

One IDEXX Drive
Westbrook, Maine 04092 USA
idexxbioanalytics.com

Jamie-Newton@idexx.com
m. 571-422-0840



Jeffrey Kovacs, PhD

Account Manager - Mid-Atlantic Academic/Government
IDEXX BioAnalytics

One IDEXX Drive
Westbrook, Maine 04092 USA
idexxbioanalytics.com

Jeffrey-Kovacs@idexx.com
m. 412-588-5562

Quarter 4 2019

Ken Shapiro

Sales Manager



Animal Environmental Control Products

562 Captain Neville Drive
Waterbury, CT 06705
Tel: (800) 243-5350
Cell: (203) 233-1561
kshapiro@pharmaceutical.com

P.O.Box 369
Naugatuck, CT 06770
Fax: (203) 755-4309
www.pharmaceutical.com

Frank Lynch

Mid-Atlantic Sales



Animal Environmental Control Products

562 Captain Neville Drive
Waterbury, CT 06705
Tel: (800) 243-5350
Cell: (703) 599-9259
flynch@pharmaceutical.com

P.O.Box 369
Naugatuck, CT 06770
Fax: (203) 755-4309
www.pharmaceutical.com



Mitchell Kanarek
President

516.781.0755
mitch@ancare.com



Nancy McCormick
Regional Sales Manager

484.593.0730
nancy@ancare.com

800.645.6379
516.781.0755

www.ancare.com

800.645.6379
516.781.0755

www.ancare.com

P +1 512 2438539
M +1 512 5895431
Skype pat.guider1
pguider@a-tune.com
www.a-tune.com

a-tune software INC.
19621 FM 1431, Suite 402
Jonestown, TX 78645
USA

Regulatory Compliant software for IACUC, IRB, IBC and Facility Management
J. Patrick Guider Jr., BA, MPA
General Manager



P +1 512 243 8539 x 305
M +1 512 297 7447
bguider@a-tune.com
www.a-tune.com

a-tune software INC.
19621 FM 1431, Suite 402
Jonestown, TX 78645
USA

Regulatory Compliant software for IACUC, IRB, IBC and Facility Management
Bryan Guider
Account Executive



LABRepCo
One Company • Many Solutions

www.labrepco.com

David Freeman
Sales Representative
david.freeman@labrepco.com

101 Witmer Road, Suite 700
Horsham, PA 19044 USA
Toll Free: 1.800.521.0754, ext. 190
Tel: 215.442.9202
Fax: 215.442.9202

LABRepCo
One Company • Many Solutions

www.labrepco.com

Carrie Kanaby
NC/SC Area Representative
carrie.kanaby@labrepco.com

101 Witmer Road, Suite 700
Horsham, PA 19044 USA
Toll Free: 1.800.521.0754, ext. 172
Tel: 919.349.7804
Fax: 215.442.9202



Baxton VAUGHAN

Client Representative
cell 484 889 7158 | e-mail: bvaughan@tecniplastusa.com

Toll Free 877 669 2243 | Fax 484 875 0511

PO Box 1209, West Chester, PA 19380
www.tecniplastusa.com



Jon LEDFORD

Regional Sales Director, South East & Mid West
cell 484 798 7687 | e-mail: jledford@tecniplastusa.com

Toll Free 877 669 2243 | Fax 484 875 0511

PO Box 1209, West Chester, PA 19380
www.tecniplastusa.com



ARTIE KINGREN PRESIDENT

570-224-2823 | www.optimize-courier.com
516-510-7598 | artie@optimize-courier.com



Morgan Holmes
Sales Director, Southeast
Research Models and Services

T +1 919 400 1418
E morgan.holmes@envigo.com

Envigo
8520 Allison Pointe Boulevard, Suite 400
Indianapolis, IN 46250
envigo.com



SHEPHERD | SPECIALTY PAPERS

RENE KETELSEN Regional Sales Manager

Phone (615) 449-3398
Cell (615) 239-4200
Fax (615) 523-1783
rketelsen:ssponline.com
www.ssponline.com

P.O. Box 64
112 Tennessee Blvd.
Watertown, TN 37184
Phone (800) 382-5001
Fax (615) 237-3267



ALTERNATIVE DESIGN
MANUFACTURING & SUPPLY, INC.

www.altdesign.com

Peggy Nahorski
Account Manager
peggy@altdesign.com

P.O. Box 6330
3055 Cheri Whitlock Drive
Siloam Springs, AR
72761-6330

314-308-6999 Cell
800-320-2459 Corp.
479-524-4125 Fax



Certified to ISO 9001

Arnie Markwald 800 558 5913
North American Sales Manager 262 492 7258 Cell
262 534 5181 ext 255
262 534 5184 Fax

arnie.markwald@edstrom.com 819 Bakke Avenue
Waterford WI 53185
www.edstrom.com



Certified to ISO 9001

Chip Ahrens 800 558 5913
Southeast Sales Consultant 352 213 0745 Cell

chip.ahrens@edstrom.com 819 Bakke Avenue
Waterford WI 53185
www.edstrom.com

Quarter 4 2019

Bio Serv
Delivering Solutions...
◆ Nutritional ◆ Enrichment ◆ Medicated ◆ Special Needs

Karen Froberg-Fejko
LATg, VMD
President

Phone: 800-996-9908 ext. 135
Email: kfroberg@bio-serv.com

800-996-9908 (US and Canada)
908-284-2155 (International)
Fax: 908-284-4753

3 Foster Lane, Suite 201
Flemington, NJ 08822
ISO 9001:2008 Certified
www.bio-serv.com



Lab Bedding Products

Colleen Kander
Regional Sales Manager

(419) 377-3639 Cell
(419) 891-6539 Fax

521 Illinois Avenue
P.O. Box 119
Maumee, OH 43537

colleen_kander@andersonsinc.com
www.andersonslabbedding.com

Kelly Ham
Director of Sales
kham@labsupplytx.com

Lab Supply

"Providing quality animal care products from exceptional companies."

54 Remington Drive
Highland Village, TX 75077
www.labsupplytx.com

Cell: 817.422.8461
Office: 800.262.5258

Steve Barrons

Vice President - Technical Services

sbarrons@sanitationstrategies.com
1.517.214.5112



SANITATION STRATEGIES

Hygienic Solutions for Critical Environments™

The Jackson Laboratory

Ella Torian
Opportunity Development Manager I
Southeast
ella.torian@jax.org

207.288.1404 t
207.266.8685 m
www.jax.org

Troy Livingston

Sales Manager
Life Sciences Group

Cell: 717.378.1228
Phone: 800.388.4762
Fax: 800.377.3473
tlivingston@rochestermidland.com

10525 Randleman Road
Randleman, NC 27317 JSA



www.rochestermidland.com



ISO 9001:2015 Certified

HEATHER GRAY
Regional Account Specialist

919-536-8152
901-507-0480
Toll-free 888-321-2113 x 143

hgray@transnetyx.com
www.transnetyx.com

8110 Cordova Rd. Suite 119
Cordova, TN 38016

Transnetyx
Serving research. Saving time.

lab products
a **Medi** company

Donna Daneluzzi
Sales Executive

ddaneluzzi@labproductsinc.com

3100 Grayhawk Ct.
Aurora, IL 60503

cell | 410-829-9554
web | labproductsinc.com / hydropac.net

741 SUSSEX AVENUE • SEAFORD, DELAWARE 19973 • TEL 800-524-0469

Quarter 4 2019



Miele Group Member

Matteo Vecchiato

Marketing Manager Pharma/Life Science

Phone: +39 0423 756325

Mobile: +39 388 7972230

E-mail: m.vecchiato@steelcospa.com

Steelco S.p.A.

Via Balegante, 27 - 31039 Riese Pio X (TV) - Italy

Ph. +39 0423 7561 - Fax +39 0423 755528

PI./VAT IT 04311220265

www.steelcogroup.com

INSTECH

Lena Medina, RLATG

SALES DIRECTOR, NORTH AMERICA

direct: 610.629.6000

mobile: 619.993.3320

lmedina@instechlabs.com

Instech Laboratories, Inc.

450 South Gravers Road

Plymouth Meeting, PA 19462 USA

main: 800.443.4227

www.instechlabs.com



Miele Group Member

Fabio Mazzucchelli

Project Director Life Science

Mobile: (+1) 561 951 0177

E-mail: fabio@steelco-usa.com

Steelco USA Inc., 7354 Central Industrial Drive

33404 West Palm Beach, FL, USA

Phone: +1 561-791-8313

Fax: +1 561-660-5222

www.steelcogroup.com

SUBURBAN SURGICAL COMPANY, INC.

275 Twelfth Street

Wheeling, Illinois

60090 · USA

Main: 847.537.9320

Toll Free: 800.323.7366

Fax: 847.537.9061

sales@suburbansurgical.com

Sarala Sarah

Strategic Account Manager

Taconic Biosciences, Inc.

1 Discovery Drive, Suite 304

Rensselaer, NY 12144

M 215.316.2357

E sarala.sarah@taconic.com

TACONIC.COM



Kerry Robinson, PhD

Strategic Account Manager, Government

Taconic Biosciences, Inc.

1 Discovery Drive, Suite 304

Rensselaer, NY 12144

M 404.450.4995

E kerry.robinson@taconic.com

TACONIC.COM



Medline Industries, Inc.
Three Lakes Dr.
Northfield, IL 60093

Kevin Feighery
Vice President
Education and Research

C: 704.975.5477

kfeighery@medline.com

1.800.MEDLINE
medline.com



Maria Cariglia

Account Manager

1 Kelley Square, Worcester, MA 01610

508.755.2243, x118; Fax:

508.755.2249mariac@labexofma.com

Quarter 4 2019

Vendor members, don't see your business card listed? All vendor members are entitled to a business card space in our newsletter and on our website, so please send a current business card to info@rtbaalas.org so our members know how to reach you. Interested in a half or full page ad? Please contact us for pricing.